

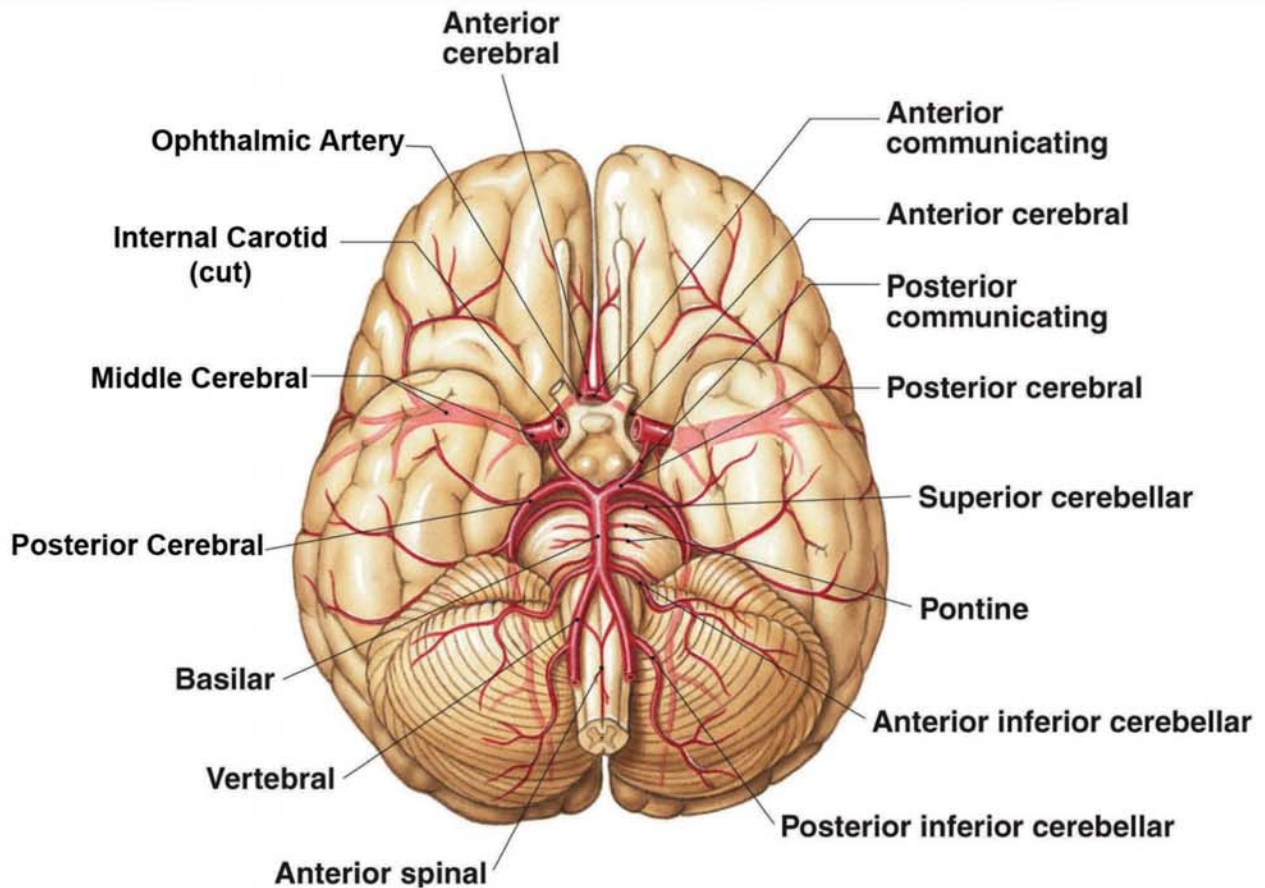


GOING BEYOND EYECARE
The Center of Disease Control States That Stroke is the 3rd Leading Cause of Death behind Cardiovascular Disease and Cancer
The Journal of the American Medical Association States That 75% of all Strokes occur within the "Circle of Willis"



TRANSCRANIAL DOPPLER (TCD)

A Transcranial Doppler (TCD) is a 10 minute non-invasive, painless and extremely safe ultrasound looking at all of the major arteries and vessels of the Circle of Willis. This allows for the assessment of a patients risk of stroke/ocular stroke by measuring the Ophthalmic Artery and Cerebral Vascular blood flow.



COMMON SYMPTOMS / CONDITIONS

- . Migraine Headaches
- . Visual Field Defect
- . History of TIA
- . Amaurosis Fugax
- . Transient Vision Loss
- . Retinal Ischemia
- . History of Stroke
- . Ocular Migraine
- . Visual Field Disturbance
- . Diabetic Retinopathy
- . Diplopia
- . Sudden Visual Loss
- . Ophthalmic Occlusion
- . Glaucoma
- . Hypertensive Retinopathy
- . Carotid Artery Disease

Talk To Your Doctor About Being Screened Today With Our State Of The Art Transcranial Doppler Technology